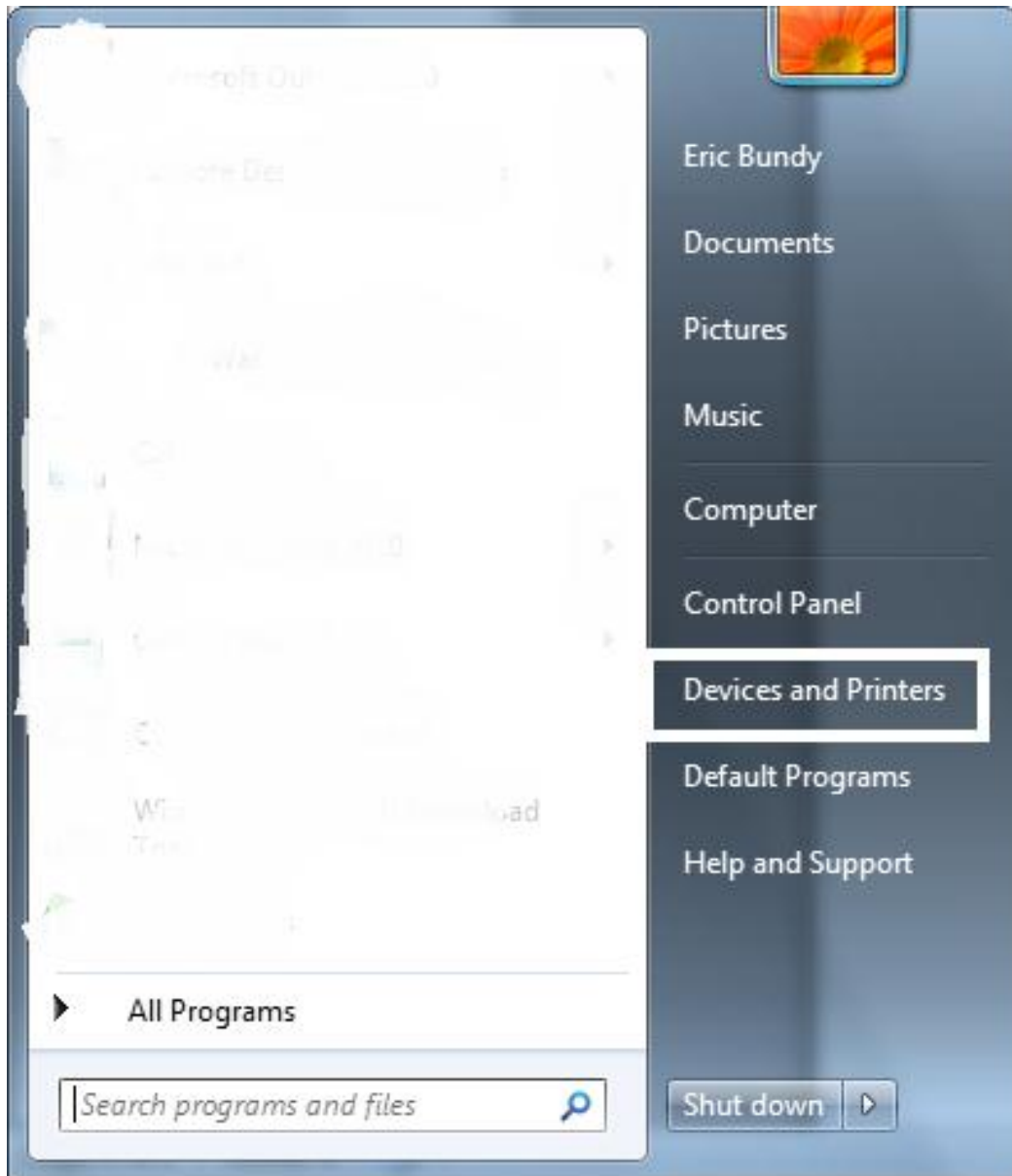


Directions to set up Secure Printing

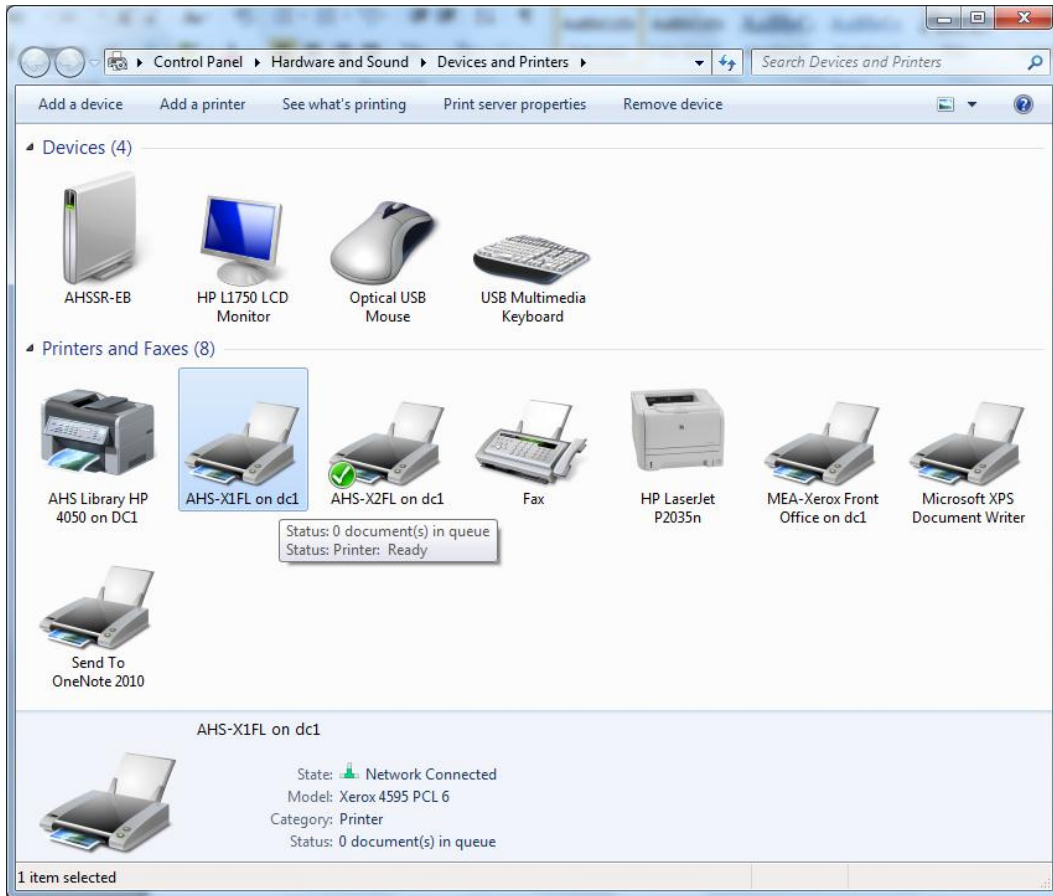
Click Start

Then Click on "Devices and Printers"

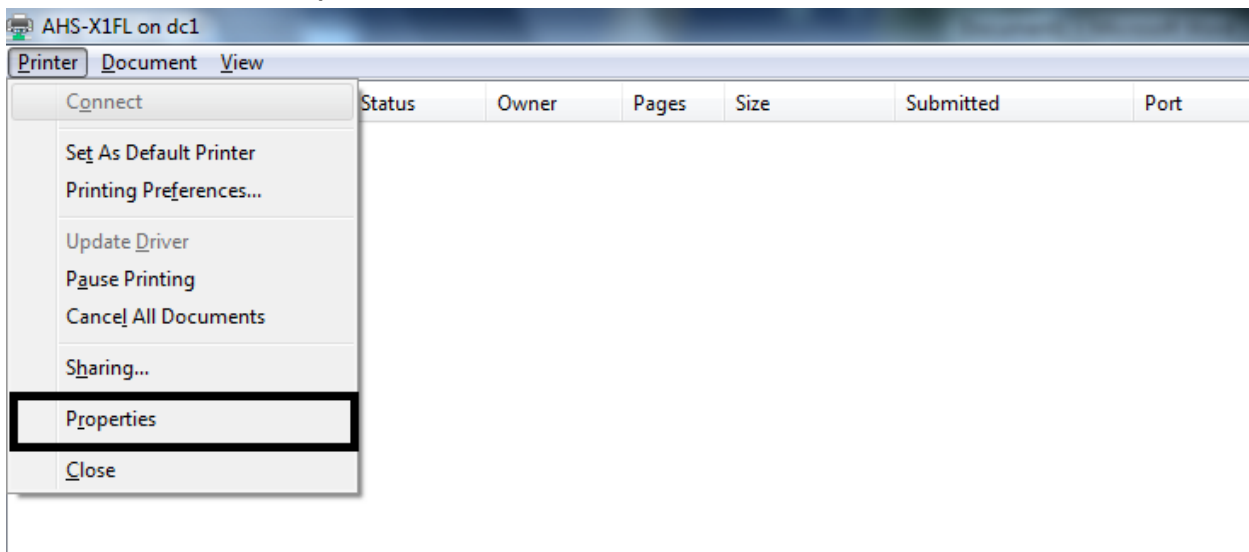


Directions to set up Secure Printing

Double click on the printer you want to "SECURE Print" to

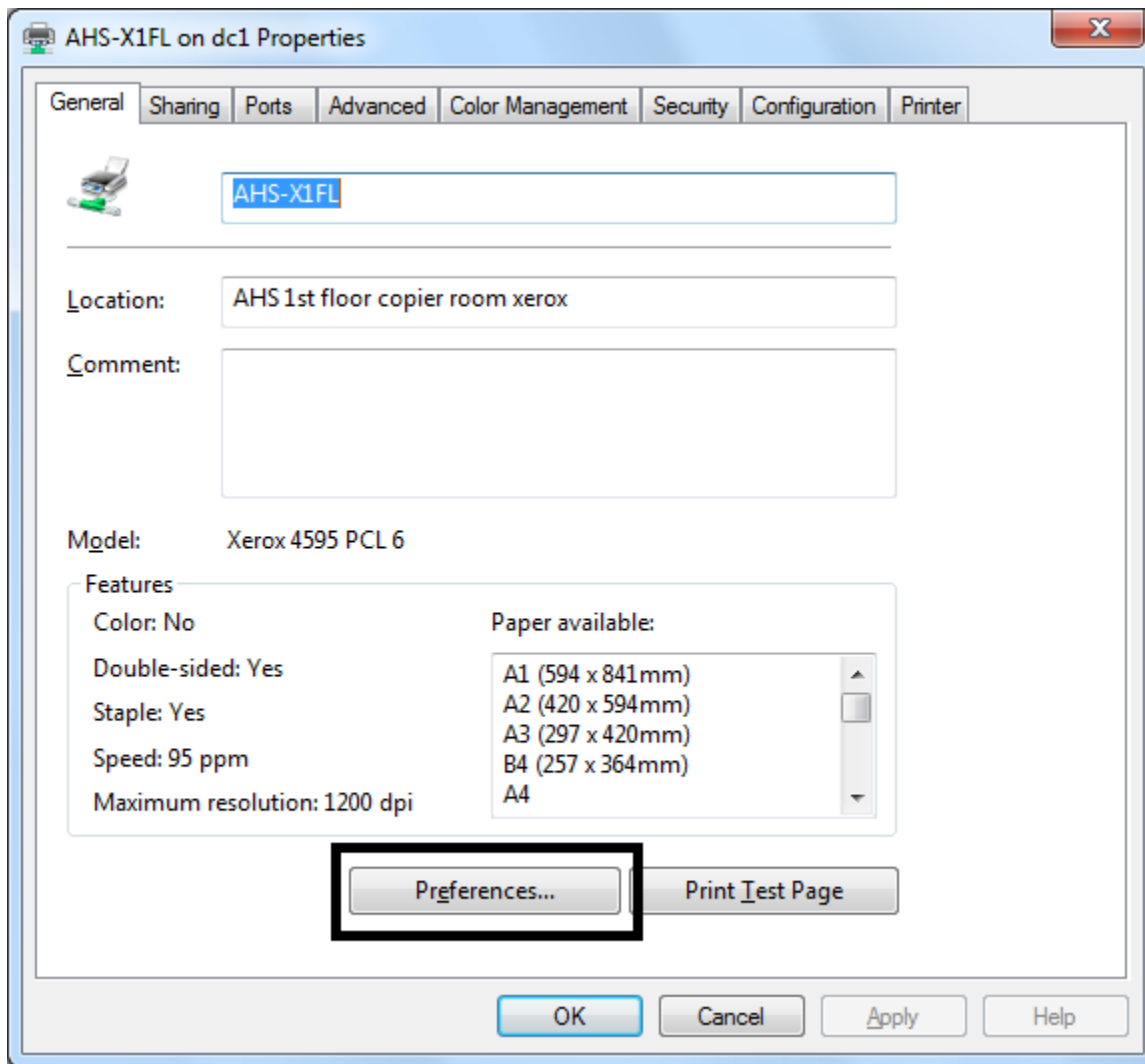


Then click on "Printer Properties"



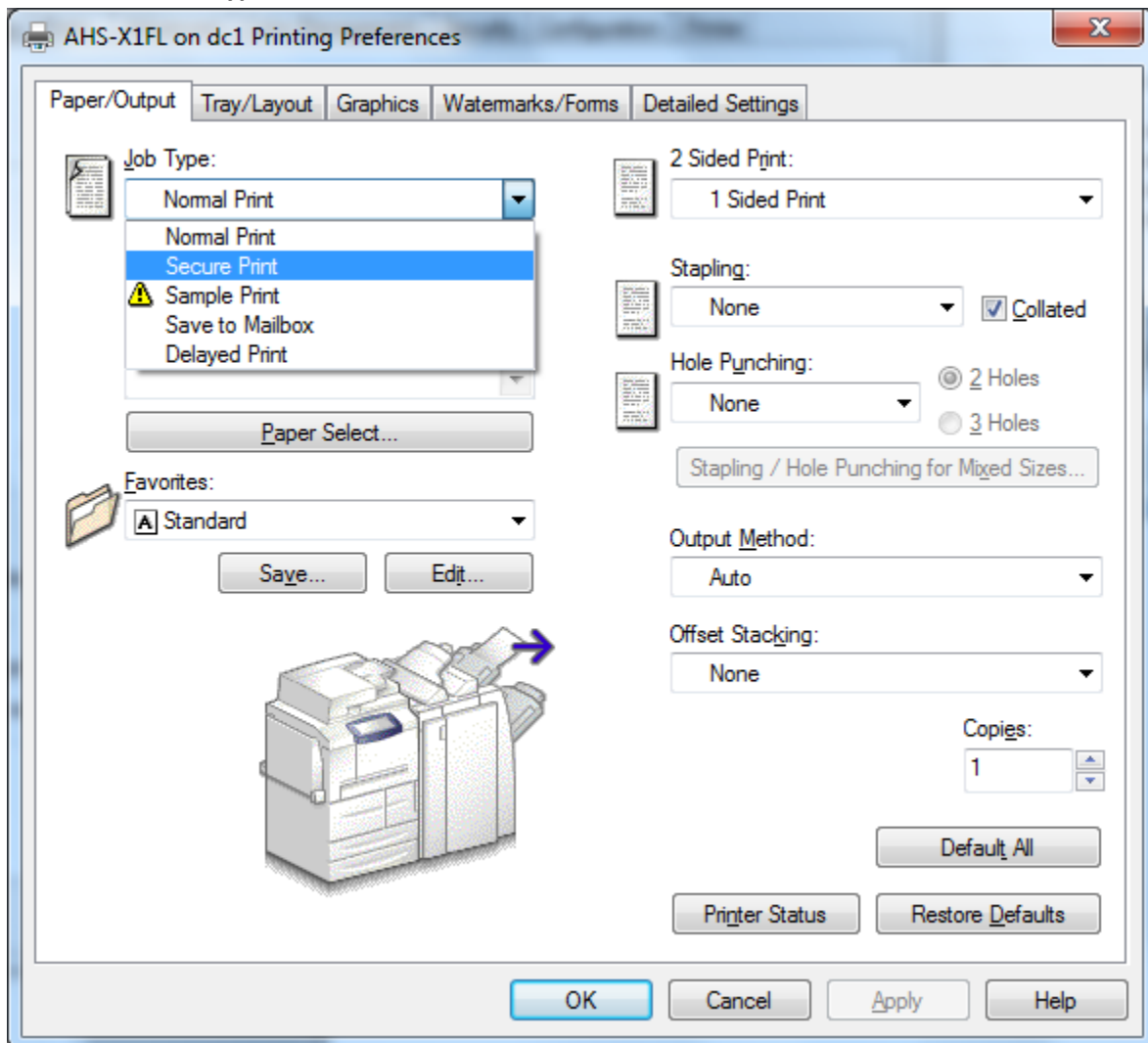
Directions to set up Secure Printing

Then click on "Preferences"

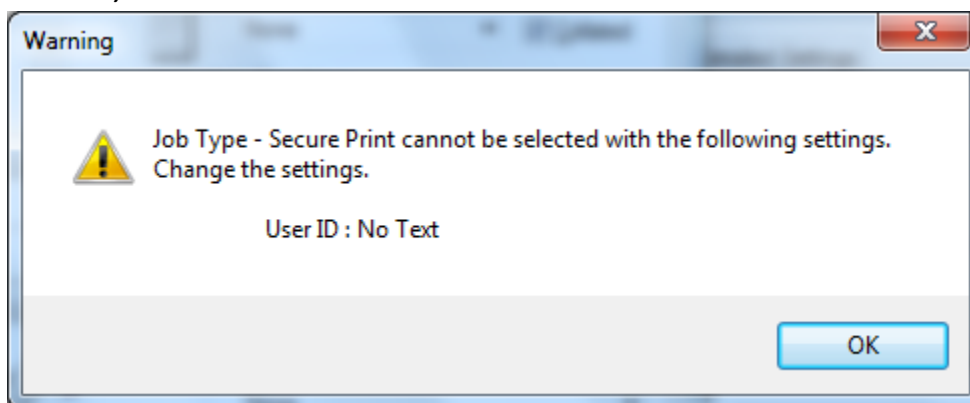


Directions to set up Secure Printing

Then choose Job Type "Secure Print"



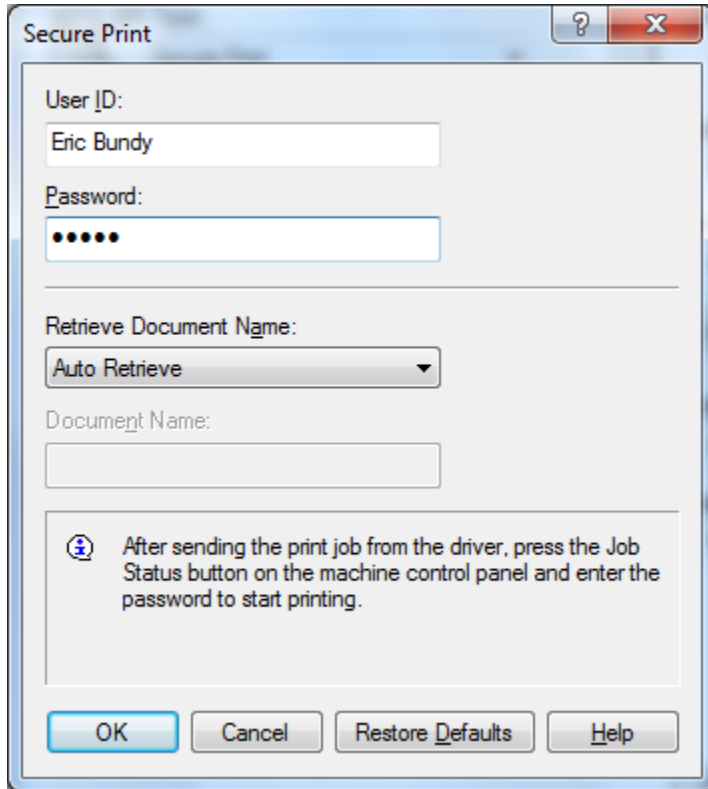
Press OK, twice



Directions to set up Secure Printing

Enter your First and Last name In the User ID Line

Enter your NUMERIC Password directly below and press OK



The image shows a Windows-style dialog box titled "Secure Print". It contains the following fields and controls:

- User ID:** A text input field containing "Eric Bundy".
- Password:** A text input field containing six black dots.
- Retrieve Document Name:** A dropdown menu with "Auto Retrieve" selected.
- Document Name:** An empty text input field.
- Instructions:** A text box with an information icon and the text: "After sending the print job from the driver, press the Job Status button on the machine control panel and enter the password to start printing."
- Buttons:** "OK", "Cancel", "Restore Defaults", and "Help".

Directions to set up Secure Printing

Press OK once more and you are now set up for Secure Printing on that printer

